

# CAB + RPV LA IMPLEMENTATION OUTCOMES AND ACCEPTABILITY OF MONTHLY CLINIC VISITS IMPROVED DURING COVID-19 PANDEMIC ACROSS US HEALTHCARE CLINICS (CUSTOMIZE: HYBRID III IMPLEMENTATION-EFFECTIVENESS STUDY)

Maggie Czarnogorski,<sup>1</sup> Cindy Garris,<sup>1</sup> Larissa Stassek,<sup>2</sup> Sonal Mansukhani,<sup>2</sup> Ronald D'Amico,<sup>1</sup> Marybeth Dalessandro,<sup>3</sup> Will Williams,<sup>4</sup> Sterling Wu,<sup>4</sup> Michael Wohlfelder,<sup>5</sup> Jason Flamm,<sup>6</sup> Paul Benson,<sup>7</sup> Christine Zurawski,<sup>8</sup> Matthew Bosse<sup>1</sup>

<sup>1</sup>ViiV Healthcare, Research Triangle Park, NC, USA; <sup>2</sup>Evidera, Bethesda, MD, USA; <sup>3</sup>ViiV Healthcare, Collegeville, PA, USA; <sup>4</sup>GlaxoSmithKline, Collegeville, PA, USA; <sup>5</sup>AIDS Healthcare Foundation, Los Angeles, CA, USA; <sup>6</sup>Kaiser Permanente Sacramento, Sacramento, CA, USA; <sup>7</sup>Be Well Medical Center, Berkley, MI, USA; <sup>8</sup>Atlanta ID Group, Atlanta, GA, USA

## Introduction

- Cabotegravir (CAB) and rilpivirine (RPV) have been approved in the United States, Canada, Australia, and Europe as the first complete long-acting (LA) injectable regimen indicated for the maintenance of virologic suppression in people living with HIV-1 (PLHIV)<sup>1,2</sup>
- CUSTOMIZE is a phase IIIb, 12-month, hybrid III implementation-effectiveness study evaluating the implementation of CAB + RPV LA in US healthcare settings from the perspectives of healthcare providers and PLHIV
  - CUSTOMIZE started in July 2019 and continued during and after March 2020 when much of the United States began COVID-19 pandemic-related closures
- This analysis evaluates the impact of the COVID-19 pandemic on CAB + RPV LA implementation outcomes in CUSTOMIZE

## Methods

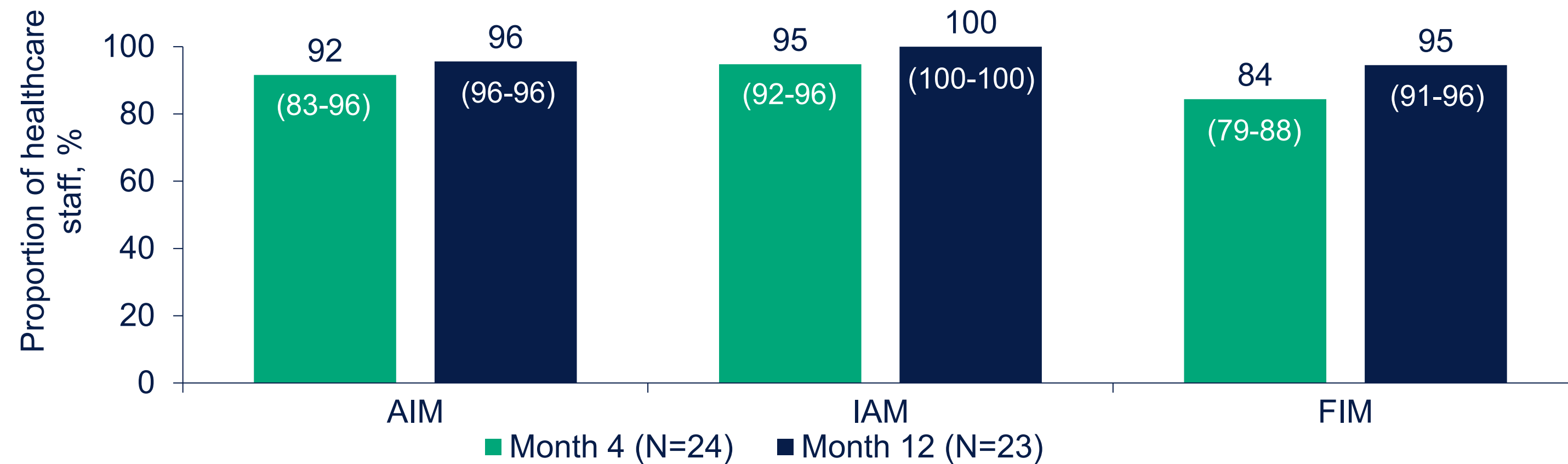
- CUSTOMIZE is a single-arm study that enrolled virologically suppressed PLHIV at 8 US clinics to receive monthly CAB + RPV LA injections after a 1-month oral lead-in
- Patient participants with a COVID-19-impacted visit were defined as those with a COVID-19-related protocol deviation on file (eg, missed or rescheduled injection visit, quarantine, COVID-19 diagnosis, clinic closure)
- This analysis includes data from healthcare staff and participant surveys conducted before COVID-19 at Month 4 (~November to December 2019) and during COVID-19 at Month 12 (~October 2020) and from interviews at Month 12
  - Acceptability of intervention measure (AIM), intervention appropriateness measure (IAM), and feasibility of intervention measure (FIM) were 4-item questionnaires that used a 5-point rating scale (1 = completely disagree to 5 = completely agree) to assess the acceptability, appropriateness, and feasibility of CAB + RPV LA implementation, respectively
  - Attitudes, experiences, and preferences regarding the CAB + RPV LA regimen were assessed in survey questions and compared between participants with and without COVID-19-impacted visits

## Results

### Healthcare Staff Perceptions

- Healthcare staff (separated into 3 groups: physicians and principal investigators, nurses and injectors, and office administrators) from 8 US clinics completed surveys at Month 4 (N=24) and Month 12 (N=23)
  - Healthcare staff were from federally qualified health centers, private practices, and university practices (25% each) or AIDS Healthcare Foundation clinics and health maintenance organizations (13% each)
- The proportion of healthcare staff who agreed or completely agreed that CAB + RPV LA was acceptable, appropriate, and feasible to implement increased during COVID-19 (Month 12) compared with before COVID-19 (Month 4; Figure 1)
- Before COVID-19, at Month 4, the most frequently reported concern among healthcare staff was awareness of missed injection visits (46%), which decreased during COVID-19 at Month 12 (22%)
- More healthcare staff disagreed that the following were barriers to implementation at Month 12 vs Month 4:
  - Patient failing CAB + RPV LA due to missed injection visits (78% vs 42%)
  - Management of patients' other care needs (74% vs 42%)
  - Patient transitioning from oral to injectable treatment (91% vs 79%)

**Figure 1. Healthcare Staff Perspectives on the Acceptability (AIM), Appropriateness (IAM), and Feasibility (FIM) of CAB + RPV LA Over Time**



Each bar represents the mean (range) proportion of healthcare staff who agreed or completely agreed with each of the 4 statements in the questionnaire. AIM, acceptability of intervention measure; FIM, feasibility of intervention measure; IAM, intervention appropriateness measure.

### Participant Perceptions

#### Study Population

- Of 102 participants who were ongoing at Month 12, most were men aged <50 years (Table 1)
- At Month 12, 19% (19/102) of participants had ≥1 COVID-19-impacted visit because of missed or rescheduled visits, quarantine, COVID-19 diagnosis, or clinic closure
  - No participants with COVID-19-impacted visits withdrew from the study

**Table 1. Baseline Characteristics Among Participants Impacted and Not Impacted by COVID-19**

Parameter, n (%)	Total (N=102)	COVID-19 impacted (N=19)	Not impacted by COVID-19 (N=83)
Age, y			
20-49	79 (77)	17 (89)	62 (75)
≥50	23 (23)	2 (11)	21 (25)
Female	14 (14)	0	14 (17)
Race and ethnicity			
White or Caucasian or European heritage	59 (58)	14 (74)	45 (54)
Black or African American	36 (35)	3 (16)	33 (40)
American Indian or Alaskan Native	5 (5)	1 (5)	4 (5)
Multiple	2 (2)	1 (5)	1 (1)
Hispanic or Latino	28 (28)	12 (63)	16 (19)

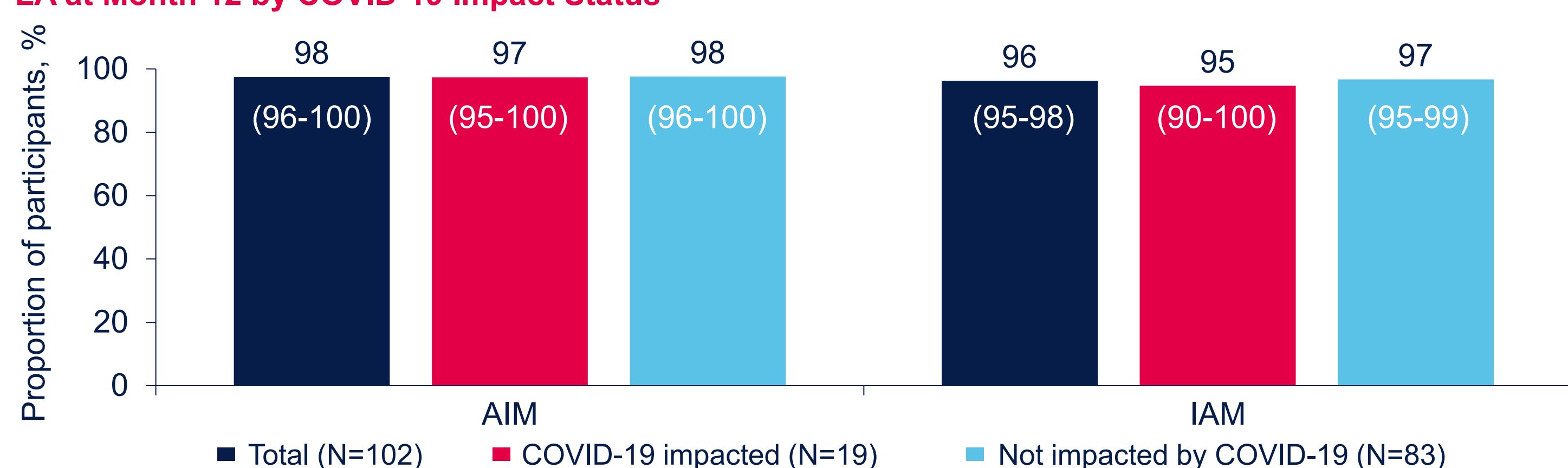
### Virologic Outcomes

- All participants with available viral load data (n=101) maintained virologic suppression (HIV-1 RNA <50 c/mL) at Month 12
  - 1 additional participant with missing data at Month 12 due to a COVID-19 diagnosis maintained HIV-1 RNA <50 c/mL at an unscheduled visit at Month 13
- 8 participants received oral therapy with CAB + RPV tablets to cover a COVID-19-impacted injection visit
  - All 8 participants restarted LA therapy, and there were no virologic failures (2 consecutive HIV-1 RNA measurements ≥200 c/mL)

### Survey Outcomes

- Among all participants, mean implementation scores increased during COVID-19 at Month 12 vs before COVID-19 at Month 4 (mean AIM score, 4.78 vs 4.61; mean IAM score, 4.76 vs 4.60)
- Most participants (≥95%) agreed or completely agreed that CAB + RPV LA was acceptable and appropriate to implement regardless of COVID-19 impact status (Figure 2)

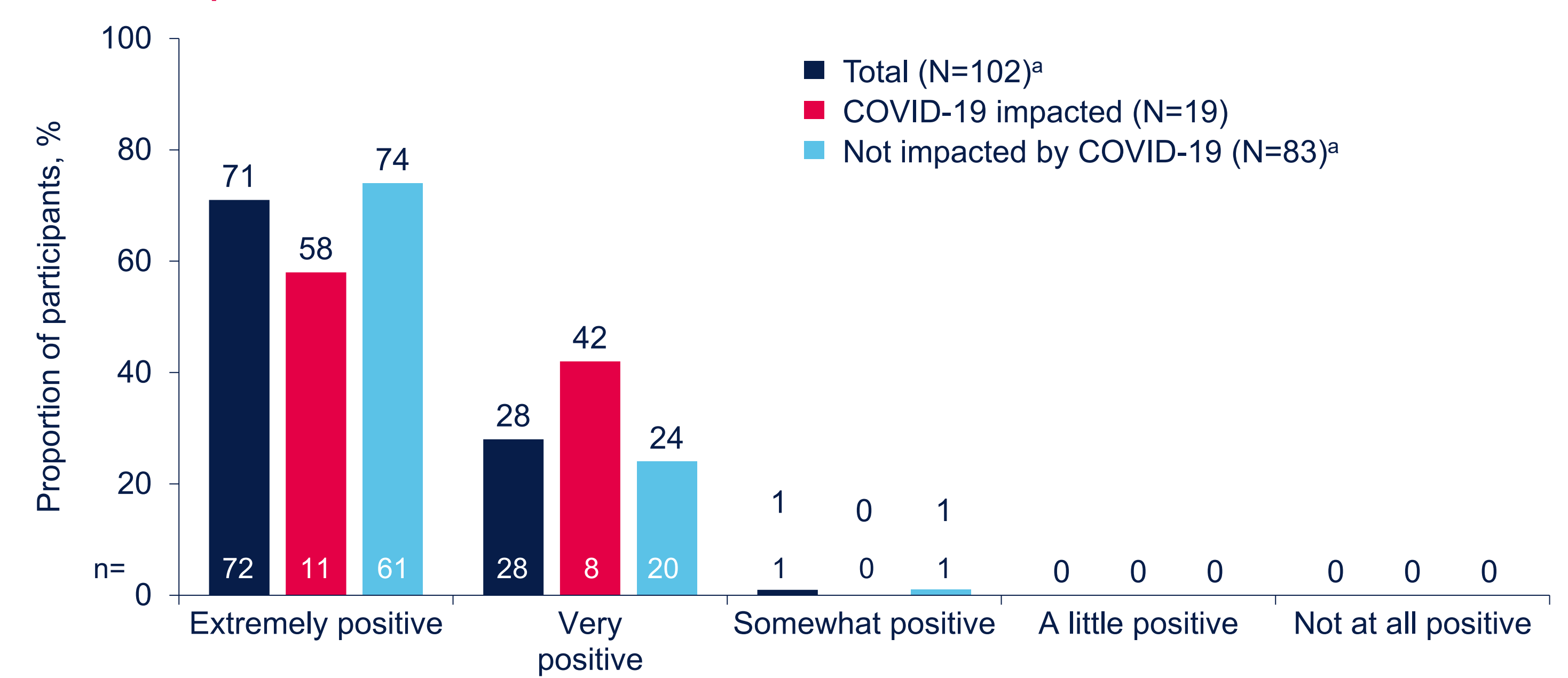
**Figure 2. Participant Perspectives on the Acceptability (AIM) and Appropriateness (IAM) of CAB + RPV LA at Month 12 by COVID-19 Impact Status**



Each bar represents the mean (range) proportion of participants who agreed or completely agreed with each of the 4 statements in the questionnaire. AIM, acceptability of intervention measure; IAM, intervention appropriateness measure.

- During COVID-19, at Month 12, most participants (89/102; 87%) found coming to the clinic monthly very or extremely acceptable, including those with COVID-19-impacted visits (18/19; 95%)
- Positivity about receiving CAB + RPV LA treatment was high among all participants during COVID-19, with 100% (19/19) and 98% (81/83) of participants who were impacted or not impacted by COVID-19, respectively, feeling very or extremely positive at Month 12 (Figure 3)

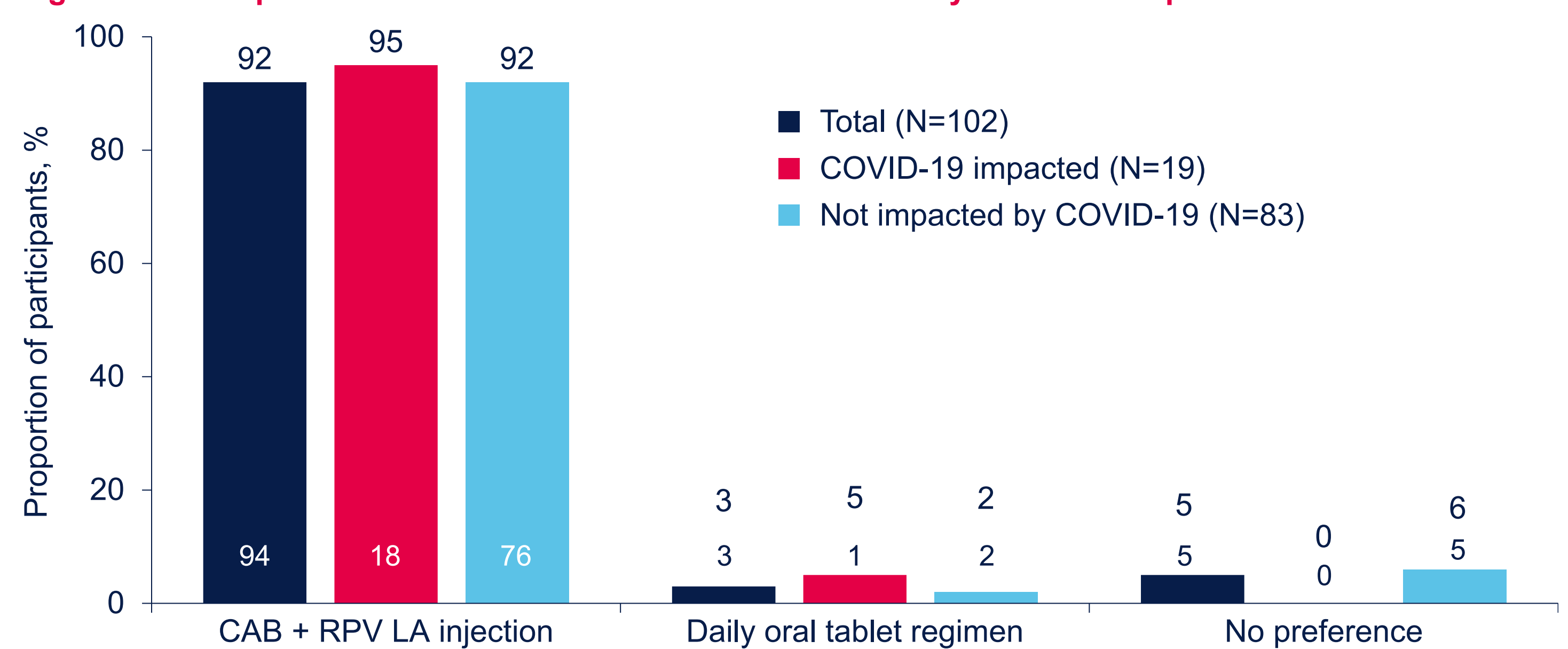
**Figure 3. Participant Feelings About Receiving CAB + RPV LA Injection Treatment at Month 12 by COVID-19 Impact Status**



<sup>a</sup>1 participant not impacted by COVID-19 had missing data.

- At Month 12, most participants (94/102; 92%) preferred CAB + RPV LA injection vs daily oral therapy, including most (18/19; 95%) who had COVID-19-impacted visits (Figure 4)
- 97% (99/102) of all participants and 95% (18/19) of COVID-19-impacted participants indicated they will use CAB + RPV LA as treatment going forward

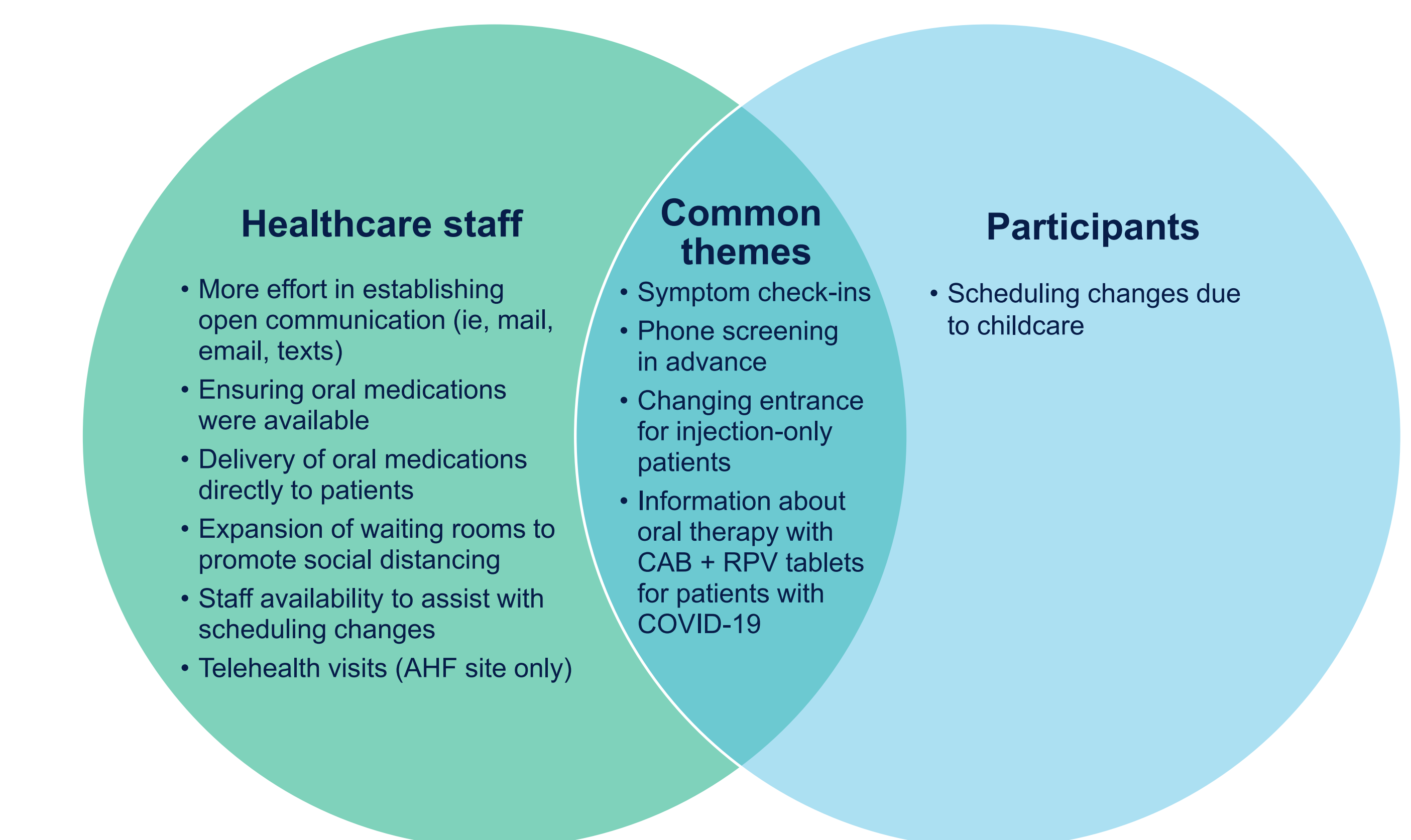
**Figure 4. Participant HIV-1 Treatment Preference at Month 12 by COVID-19 Impact Status**



### Changes Made During the COVID-19 Pandemic

- During interviews at Month 12, healthcare staff and participants described multiple changes made in the clinic to facilitate CAB + RPV LA implementation during the COVID-19 pandemic (Figure 5)

**Figure 5. Changes Made During COVID-19 as Reported by Healthcare Staff and Participants**



AHF, AIDS Healthcare Foundation.

## Conclusions

- During the COVID-19 pandemic, CAB + RPV LA implementation remained highly acceptable and appropriate among healthcare staff and participants in CUSTOMIZE
- 8 participants were given temporary oral therapy for missed injection visits and maintained uninterrupted ART, all of whom restarted LA therapy without virologic failure
- Acceptability of attending monthly clinic visits, preference for LA ART, and treatment effectiveness remained high among participants, including the 19 participants with COVID-19-impacted visits
- Despite healthcare disruptions caused by the COVID-19 pandemic, implementation data from CUSTOMIZE suggest that CAB + RPV LA is an appealing treatment option from the perspective of both healthcare providers and PLHIV

### Acknowledgments

This study was funded by ViiV Healthcare. Editorial assistance and graphic design support for this poster were provided under the direction of the authors by MedThink SciCom and funded by ViiV Healthcare.

### References

- Cabenuva [prescribing information]. ViiV Healthcare; 2021.
- Vocabria [prescribing information]. ViiV Healthcare; 2021.