

# Prevalence of asthma and severe asthma in patients affiliated to the Hospital Italiano Medical Care Program in Buenos Aires, Argentina

Poster No. P 710 (A1825)

Felipe Moraes<sup>1</sup>, Gabriela Abreu<sup>1</sup>, Thiago Nogueira<sup>1</sup>, Adrian Lijavetzky<sup>2</sup>, Jeronimo Espinosa<sup>2</sup>, Alejandro Raimondi<sup>2</sup>, Rosana Felice<sup>3</sup>, Laura Jotimlanskiy<sup>4</sup>, Gur Levy<sup>5</sup>, Valentina Di Boscio<sup>1</sup>, Valeria Beruto<sup>6</sup>, Paula Scibona<sup>7</sup>, Waldo H Bellosso<sup>8</sup>, Gabriela Alejandra Blugerman<sup>9</sup>, Graciela Svetliza<sup>9</sup>, Esteban Wainstein<sup>9</sup>, Hernán Talamoni<sup>9</sup>, Néstor Pisapia<sup>9</sup>, Claudia Soares<sup>9</sup>

<sup>1</sup>GlaxoSmithKline, Brazil; <sup>2</sup>GlaxoSmithKline, Argentina; <sup>3</sup>GlaxoSmithKline, London; <sup>4</sup>Clinical Pharmacology Section, Hospital Italiano de Buenos Aires, Argentina; <sup>5</sup>Research Department, Hospital Italiano de Buenos Aires, Argentina; <sup>6</sup>Adult Pulmonology Section, Hospital Italiano de Buenos Aires, Argentina; <sup>7</sup>Pediatric Pulmonology Section, Hospital Italiano de Buenos Aires, Argentina

## Rationale

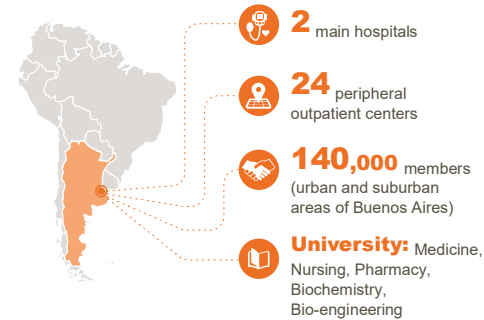
- Severe asthma (SA) drives a higher clinical and economic burden.<sup>1</sup>
- Even being a small group, most of the costs and resources use for asthma in the healthcare systems are due to SA.<sup>2</sup>
- Despite this, there is a lack of data about which proportion of the asthma population presents that phenotype in Argentina.

## Objectives:

We aimed to describe the proportion of asthma and SA patients affiliated to a prepaid health maintenance organization (HMO) located in Buenos Aires, Argentina.

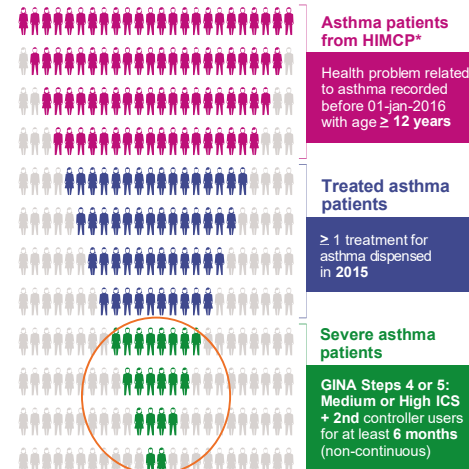
## Methods

**Data Source - Hospital Italiano de Buenos Aires:** Not only a hospital but a complete medical care program and teaching facilities



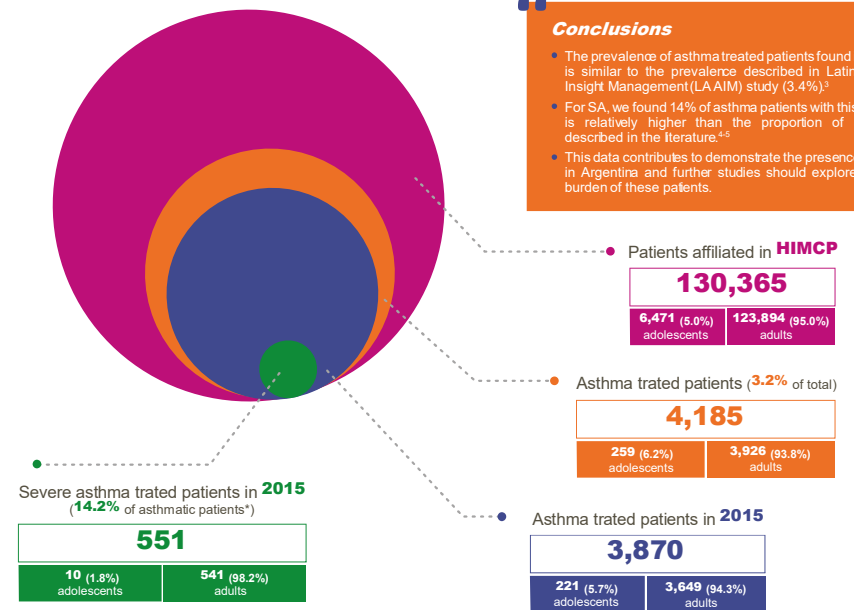
## Methods

### How severe asthma patients were identified?



\*HIMCP: Hospital Italiano Medical Care Program

## Results



\*Only patients with complete data.

Figure: Schematic representation of asthma and severe asthma patients affiliated in HIMCP in Buenos Aires, Argentina

## References

- Zinger H, Schatz M, Dahl AA, Cian L, Chen W, Ngai EW, Cruzik RY, Kaestler AA. Utilization and Costs of Severe Uncontrolled Asthma in a Managed-Care Setting. *J Allergy Clin Immunol Pract*. 2016 Jan-Feb;4(1):120-6.
- Godwin P, Chanze P, Sivadini L, Nirodyannis N, Duru G. Cost of asthma are correlated with severity: a 1-yr prospective study. *Eur Respir J*. 2002;19:61-67.
- Maspero JF, Jardim JR, Aranda A, Tassinari C P, Gonzalez-Diaz SN, Sansores RH, Moreno-Cantu JJ, Fish JE. Insights attitudes, and perceptions about asthma and its treatment: findings from a multinational survey of patients from Latin America. *World Allergy Organ J*. 2013 Nov;4(1):19.

- Maspero JF, Jardim JR, Aranda A, Tassinari C P, Gonzalez-Diaz SN, Sansores RH, Moreno-Cantu JJ, Fish JE. Insights attitudes, and perceptions about asthma and its treatment: findings from a multinational survey of patients from Latin America. *World Allergy Organ J*. 2013 Nov;4(1):19.
- Chanze P. Severe asthma in adults: What are the important questions? *J Allergy Clin Immunol*. 2007 Jun;119(6):1337-1348.
- Chung KF, Wenzel SE, Brozoski J, Busch A, Cantu M, Clark PJ, Alcocer M, Salazar ED, Belski S, Bleeker ER, Boulet LP, Brightling C, Chanze P, Cohen DE, Cockcroft DW, Fitz G, Gagne M, Goss P, Haniffa C, Jorgensen NJ, Kulkarni S, Linn S, Long G, International ERS/AATS Guidelines on definition, evaluation and treatment of severe asthma. *Eur Respir J*. 2014 Feb;43(2):347-3.

## Disclosures

- This study was funded by GlaxoSmithKline (PRJ2762).
- Vil, PS, WMB, GAB, GS, EW, HT and NP declares the following real or perceived conflicts of interest during the last 3 years in relation to this presentation: Grants from GlaxoSmithKline, during the conduct of the study; FM, AL, JE, AR, RF, LL, GL, VDB, and CS are GSK employees and hold shares; GA and TN are complementary workers from GlaxoSmithKline.

- Editorial support (in the form of writing assistance, including development of the initial draft based on author direction, assembling tables and figures, collating authors' comments, grammatical editing, and referencing) is provided by ProWrite.com, a subsidiary of Systèmes LTD.
- Editorial support (in the form of writing assistance, including development of the initial draft based on author direction, assembling tables and figures, collating authors' comments, grammatical editing, and referencing) is provided by ProWrite.com, a subsidiary of Systèmes LTD.

An online version of this poster can be accessed by scanning the QR code or via: <http://tag.atsjournals.org>